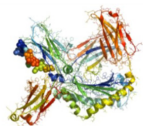


Workflow for exoglycosidase sequencing of glycans based on HPLC/LC-MS detection



Glycoprotein
or GSL

Enzymatic or
Chemical Release
of Glycans

Fluorescent
labelling and
clean-up

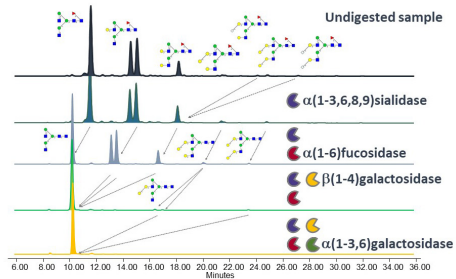
Include process controls for
monitoring exoglycosidase activity
Fluorescently labelled Gal α (1-3)Gal epitope
for monitoring galactosidase activity

Exoglycosidase
sequencing

Choose from range of
available specificities.
Example workflow for
N-glycans can include:
a(2-3,6,8,9) Sialidase [E-S001]
b(1-4) galactosidase [E-BG07]
 α (1-3,6)-galactosidase [E-AG02]
b-N-Acetylglucosaminidase [E-GL01]

Post-glycosidase
clean-up

See Ludger post-
exoglycosidase purification
spin columns LC-EXO-A6 and
96-well plate LC-EXO-96



*Exoglycosidase sequencing of procainamide
labelled N-glycans released from mouse IgG1
monoclonal antibody reveals presence of
Gal α (1-3)Gal epitope*